

Current Art Events

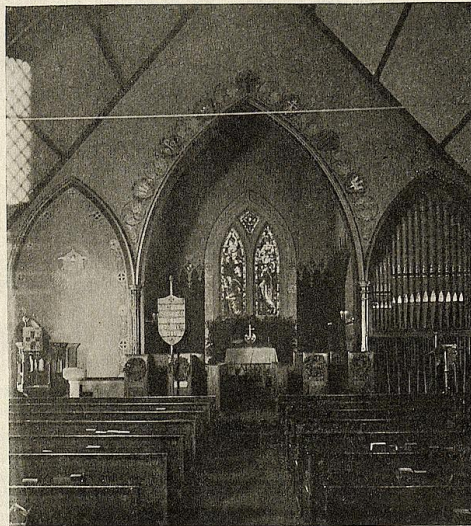
harmony between medium and method in the work we have seen, we cannot but believe that in time Mr. Dyer may be able to master the materialization of his idea, and attain his object with complete success. It is useless to attempt to be prophetic in these things, but we shall await his next exhibition with special interest.

WE REPRODUCE herewith a view of the interior of Grace Church, in Salem, Mass., showing the decorative work of Mr. Ross Turner, of Salem, an artist who has given considerable attention to this character of design. The effect of his decoration is, of course, largely lost in the reproduction owing to the lack of the colour scheme. The walls are treated in a soft green, the chancel in deep red with gold tracery, the archivolt in flat gold. The symbols of the seven churches in Asia with their emblems, the vine, wheat, sacred monograms, and so forth, surround the main arch. The memorial chancel window is English; the woodwork in the stalls, etc., is in carved oak.

MR. ROBERT REID's collection at the Fishel, Adler & Schwartz Galleries, 313 Fifth Avenue, New York, was a most interesting one. It is always a refreshment to see the work of an artist who consents to be himself without posing as a "character" of striking originality, and who adheres to certain set standards of the masters without allowing himself to become a mere imitator of any of them. The pictures of such a man at once give the impression of reality of impulse and sincerity of study and training. Tastes will differ as to which of the several phases of expression chosen by the artist makes the strongest appeal. Nor need one trouble to compare them. In his decorative work, the symbolic groups of figures, strongly drawn and well grouped, show ability for good work along lines

of mural decoration and the allied architectural fields. Then his imaginative pictures show exquisite feeling and poetry, the *Spirit of the Flame* and *Fleur de Lis* possessing those qualities to a particularly rare degree. Again, Mr. Reid's study which he calls *The Chief Justice*, shows a totally different vein, with its enigmatic suggestion and almost bizarre colouring. When one comes to his purely landscape pictures we find our favourites a matter of taste. To us, his *August* seemed one of the most perfect little canvases of its kind that we have ever seen. In it the true artist has caught the glad chorus of the very moment of bursting maturity:

the early autumnal buzz of busy insect life; the rich blooming luxuriance of grass and flower and foliage; the exhalation from the whole scene of incense-laden atmosphere—all called forth with such poignancy by colouring, treatment, touch, as to command admiration for the artistic feeling expressed by such thorough craftsmanship. Another landscape, *Spring Freshets*, was equally delightful in its own way. While less ambitious than the rest, these two appealed to us most strongly.



DECORATIONS IN GRACE CHURCH, SALEM, MASS.
BY ROSS TURNER

THE MUNICIPAL EXHIBITS at the St. Louis Fair are to be shown again at the Municipal Museum which is being opened in Chicago. Later the museum is to realize the purpose of its foundation by becoming a permanent home for displaying the artistic progress of American and foreign cities.

AT THE SCHOOL OF INDUSTRIAL ART, Broad and Pine Streets, Philadelphia, an exhibition of the work of Miss Meta Vaux Warrick was recently held under the auspices of the Alumni Association. Miss Warrick is of negro blood. After studying at the School of Industrial Art for five years, she went to Paris in 1899 where the next three years was